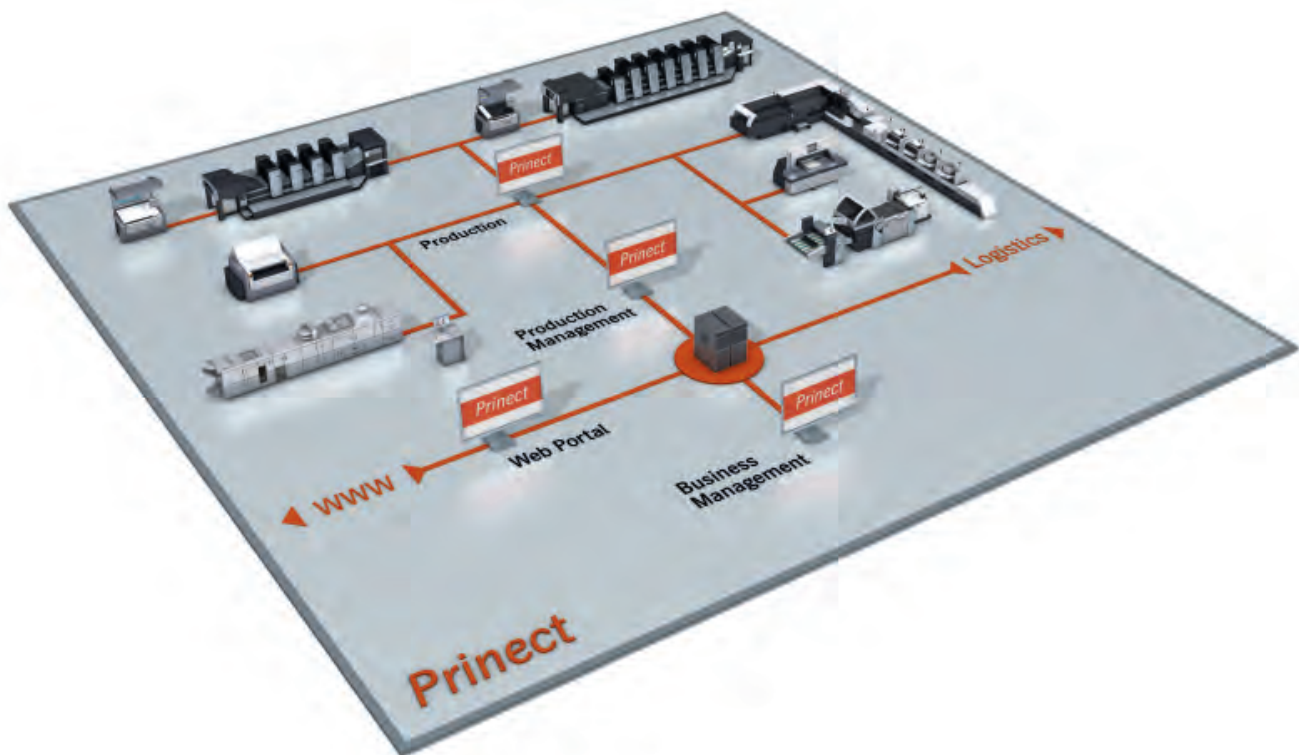


Prinect Postpress Manager

HEIDELBERG



Integrating the finishing stage • Prinect Postpress Manager™ allows full-service print shops to integrate finishing machines into their workflow. Working in harmony with the Prinect® modules, it ensures a uniquely efficient overall workflow. Postpress processes can be transparently displayed to all parties involved, allocated to particular machines and

effectively speeded up. The production data of connected finishing equipment are evaluated with Analyze Point. This is the best basis for a precise job costing. Up-to-date status displays are possible at any time on your smartphone with the application Prinect Mobile.

Perfect data and information exchange

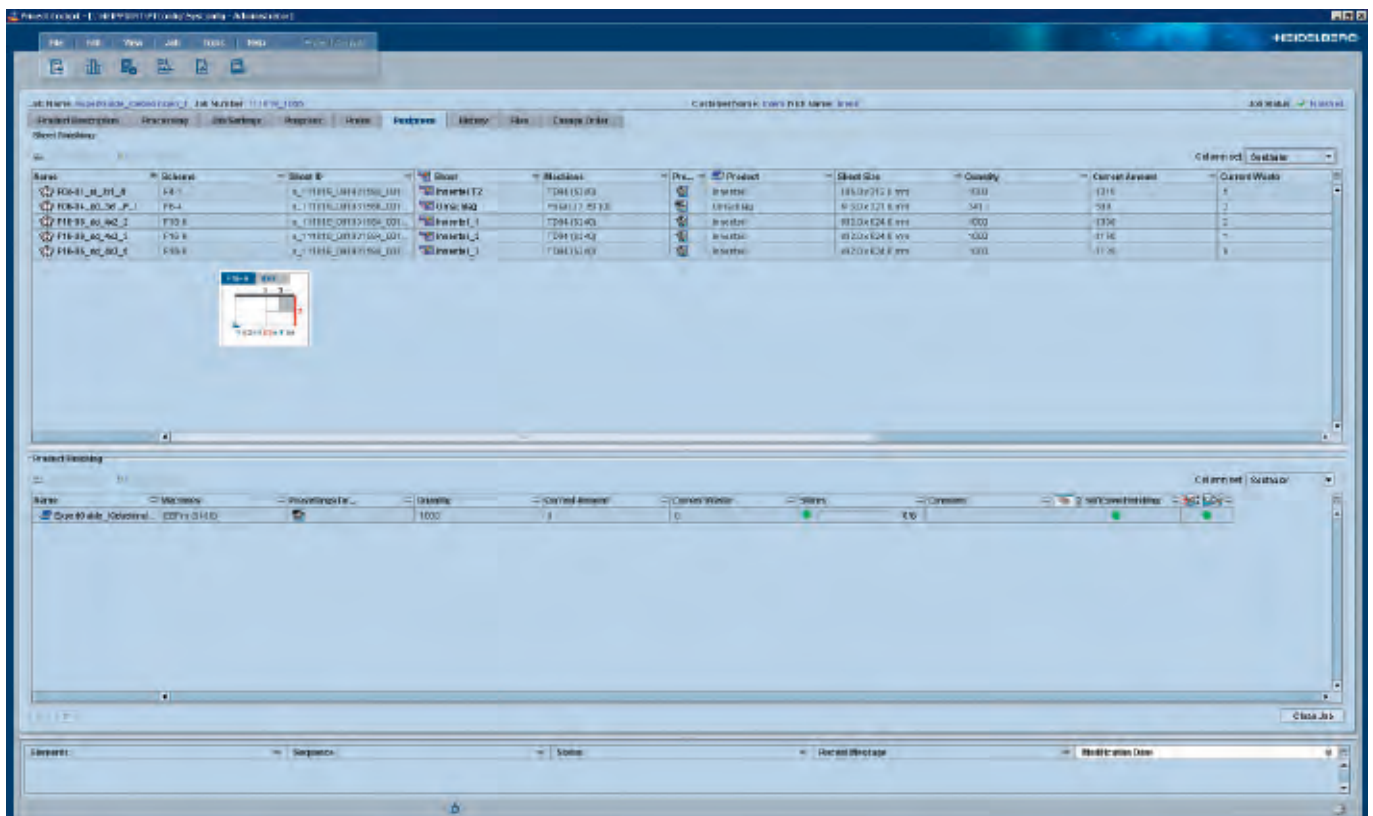
Princt Postpress Manager centrally controls all workflow stages and manages all the necessary production data. Job and product information can therefore be called up at any time at the place where it is needed, e.g. at the workstations of the finishing department, or directly at the machine control station. The operator obtains all the information required for producing the job with just a few mouse clicks.

In conjunction with Princt Integration Manager, Princt Postpress Manager enables bi-directional data exchange with the management information system (MIS) of a full-service print shop. Postpress staff receive online job information, such as customer data and run length, directly at the machine. When the job has been started, the machine relays data on production, such as speed and volume, to Princt Postpress Manager in real time. In order to achieve seamless data collection, additional operating data can be added manually. This collection of operating data at machines and workstations provides comprehensive evaluation possibilities, allowing fast and flexible reactions to changing conditions.

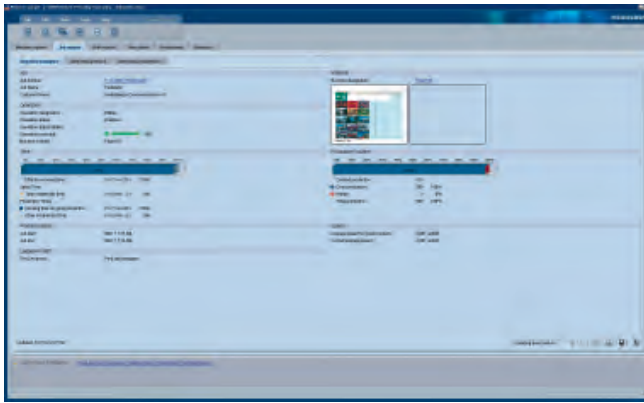
Cockpits ensure transparency • All outstanding production jobs and their status can be displayed in detail at each Princt Cockpit, a central workstation. A job list is generated automatically from current JDF job tickets. All important administrative information is listed here very clearly. This includes customer data, run length, paper and planned and executed processes.

Central management of master data • Data on customers and paper grades, which are valid for more than one job, as well as the parameters of the finishing machines, are entered once in Princt and stored centrally. This saves time and minimizes errors, as data does not have to be repeatedly input.

Intelligent allocation of jobs • In an automated workflow, all jobs must be sent to the correct machine with the necessary information and without user intervention. Princt Postpress Manager supports this automation by evaluating the JDF job tickets generated by the MIS. The job tickets define the precise sequence of operations involved in a job and therefore ensure that information is available at the relevant machine in good time ready for processing.



Upcoming production orders can be displayed in detail with Princt Cockpit.



With Analyze Point, the job status for individual operations can be viewed at any time.

Precise job evaluation with Analyze Point

Simple and up-to-date status display • Analyze Point records the current status of all production jobs at the postpress stage on a continuous basis. Data such as speed and job, and counter information, such as waste, good sheet production and remaining run length, can be called up. This forms the ideal basis for short coordination processes with the minimum of organization.

Comprehensive job evaluation • In order to respond fast and flexibly to changes, the whole production workflow must undergo regular evaluations. Analyze Point provides a user-friendly overview of work performed during individual shifts and shows how much time was needed for particular jobs. From the individual machine evaluations to an analysis of the previous 15,000 jobs, all results are displayed in clear graphics and tables. Deviations, delays or increases in waste can be precisely localized. Potential for optimization or savings can be identified and efficiently utilized for further production.

Consistent recording of daily time sheets • If an employee is registered at his finishing machine, the system generates a protocol on job sequence, activities and used material. Manual writing of slips is no longer necessary. This helps to decisively reduce errors and to speed up actual job costing.

Status information while on the move • Prinect Mobile allows you to supervise current production activities even while you are travelling. Depending on the Prinect system configuration, you can view the status of machines and jobs as well as the scheduling for pending jobs. This application for smartphones provides the sales force and print shop and department managers with valuable information for scheduling and decision-making.



Current status information of jobs and machines can be called up on smartphones.

Connecting finishing machines

Postpress staff automatically receive a list of the workflow stages and production data to which they need on-the-spot access directly at the control station of each of their finishing machines. This not only saves considerable time, but also significantly minimizes input errors. Once the job has been selected and started, work is made even easier for the operator: daily time sheets become superfluous for postpress staff, as all machine and operating data are automatically relayed to Prinect Postpress Manager and the MIS. This is another feature that helps save time, eliminate errors and support actual costing of jobs.

With Prinect Postpress Manager, the following processes can be integrated and mapped in the system: folding, cutting, compiling, saddlestitching, perfect binding, three-sided trimming, folder gluing and die cutting. Small machines and other workstations, e. g. for manual work, can be integrated via Data Terminal.

Connecting non-automated finishing machines

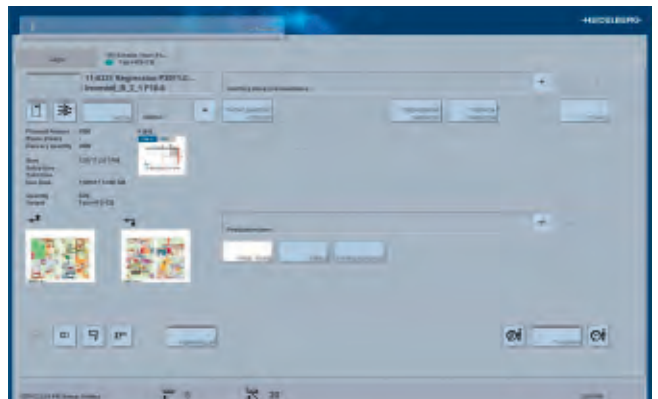
Non-automated finishing machines and machines from other manufacturers can also be incorporated into an efficient postpress workflow via a Data Terminal. To do this, Prinect Postpress Manager passes all its job data in the form of job lists to a separately installed computer. Here, all the information can be utilized directly. The up-to-date machine data are entered manually and forwarded directly from the Data Terminal to Prinect Postpress Manager – time-saving data acquisition in just a few steps. Manual acquisition can be optionally supported with the help of a counter box, by measuring the counter cycle of the finishing machine.

Reducing makeready times

Optimized handling of presetting data • In a print shop workflow that already uses Prinect Prepress Manager™, handling of presetting data for the postpress stage can be further optimized. For instance, information on the folding scheme of a job can be stored in the central JDF by the prepress department. Prinect Postpress Manager accesses the data created and stored by Prinect Signa Station®, calculates the presetting values and relays these to the machine. This shortens makeready times and production can be rapidly started.

Shorter changeover times • The work step list allows the individual work steps to be sorted and selected according to a wide range of criteria. Similar types of jobs can be sorted and grouped according to deadline, machine type and even particular formats and folding schemes. This not only cuts down on any machine changeover times, but also optimizes overall capacity utilization of machines in line with economic criteria.

Efficient processing of repeat jobs • By storing the setup data for the finishing machines, Prinect Postpress Manager enables repeat jobs to be processed highly efficiently. Makeready times are significantly reduced if jobs can be produced using settings from previous jobs.



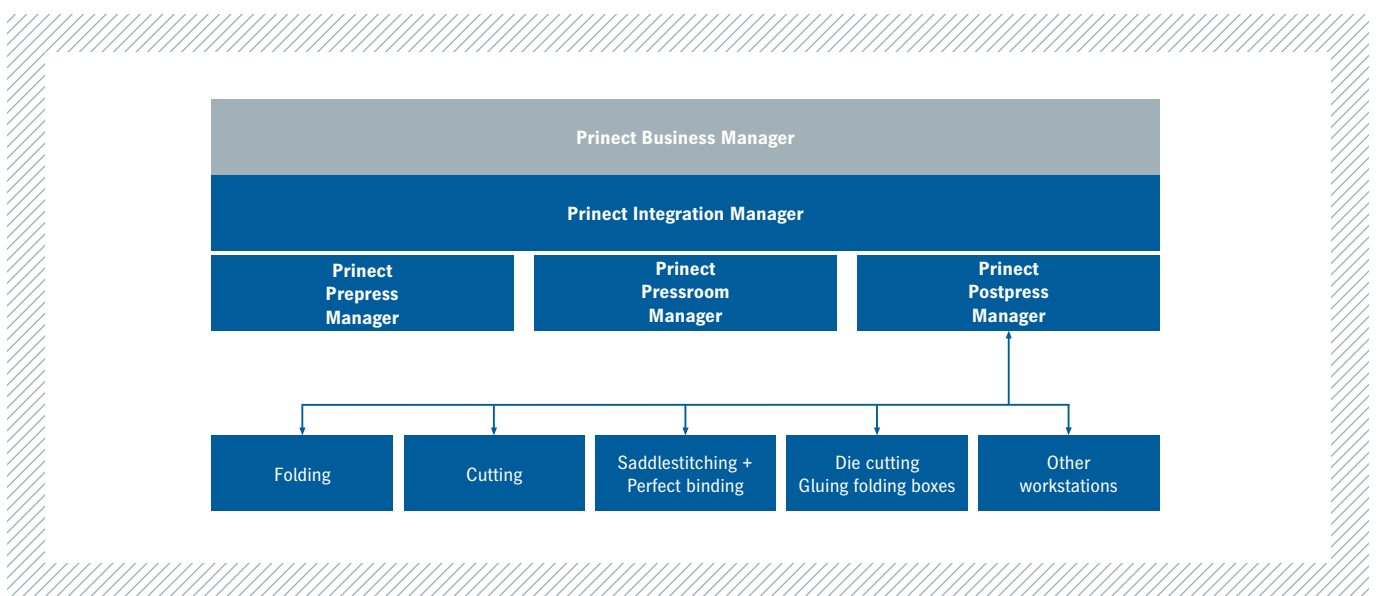
Non-automated finishing machines as well as machines from other manufacturers can be incorporated via Data Terminal.

From Prinect Postpress Manager to a complete Prinect workflow

Prinect is the modular print shop workflow from Heidelberg® which consists of hardware and software modules. This modularity ensures flexible adaption to the individual requirements of any print shop.

To be able to use Prinect Postpress Manager, you need to have Prinect Pressroom Manager and Prinect Integration Manager. Modules such as Prinect Prepress Manager or a Prinect Scheduler decisively expand the possibilities of job tracking and scheduling. With the digital planning board, sudden changes can be carried out immediately and made visible to everybody involved.

Prinect optimizes and automates workflows, making them straightforward and transparent. It is based on an open data standard – the central JDF document – that stores all the information on a particular job. Prinect plays a key role in optimizing coordination processes and increasing throughput while maintaining consistently high quality.



Prinect Postpress Manager can integrate many postpress processes – even manual workstations via a Data Terminal.

Publishing Information

Printed in: 04/12
Photographs: Heidelberger Druckmaschinen AG
Platemaking: Suprasetter
Printing: Speedmaster
Finishing: Stahlfolder
Consumables: Saphira
Fonts: HeidelbergGothicML
Printed in Germany

Trademarks

Heidelberg, the Heidelberg logotype, Prinect, Prinect Postpress Manager, Prinect Pressroom Manager and Prinect Signa Station are registered trademarks of Heidelberger Druckmaschinen AG in the U.S. and other countries. All other trademarks are property of their respective owners.

Subject to technical modifications and other changes.

00.993.3659/02 en

Heidelberger Druckmaschinen AG

Kurfuersten-Anlage 52-60

69115 Heidelberg

Germany

Phone +49 6221 92-00

Fax +49 6221 92-6999

www.heidelberg.com

