



## **Promatrix 145 CSB – built 2020** – approx. 434.000 strokes - from Show Room Wiesloch (Hall 11)



Promatrix 145  
**Video**



MasterSet  
**Video**



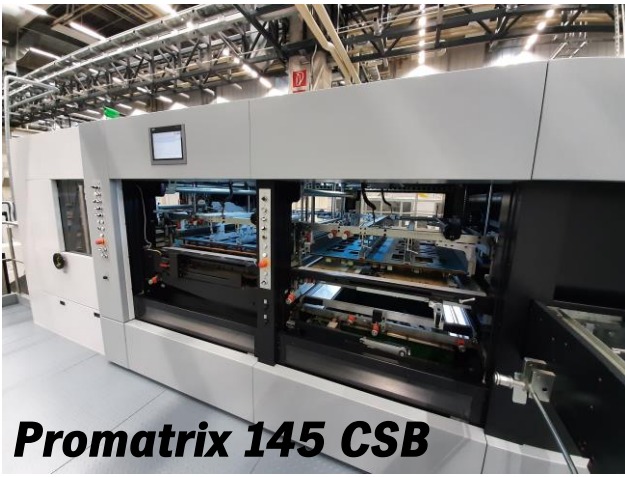
### **Promatrix 145 CSB** **Cutting – Stripping - Blanking**



- Material range: 90 – 2000 g/m<sup>2</sup>, 2mm corrugated board
- Max. speed of 7,000 sheets/h
- Max. sheet size : 1,060 x 1,450 mm
- Min. sheet size: 450 x 580 mm
- Max. cutting pressure: 550 t
- Motorized suction head adjustment (vertical & horizontal)
- Mechanical & ultra-sonic double sheet control
- **MasterSet** for precise sheet alignment
- Motorized cutting pressure adjustment
- Pneumatic locking device for die cutting chase & cutting plate
- Integrated cutting plate fine adjustment (+/- 0,9mm)
- Air cushion for easy handling of cutting plate
- Oil conditioner
- Quick lock frames for stripping boards
- Comfortable cassette frame for middle stripping board
- Vacuum bar at stripping & delivery section
- Quick lock frame for top blanking tool
- Auto-Non-Stop delivery with automatic pallet changer **on top of the floor**
- Tie sheet inserter
- Test sheet removal system
- Two touch screen operation
- Safe operation confirmed by 3<sup>rd</sup> party GS certification

#### **Equipment:**

- Elevation for 2,000 mm feeding pile
- Feeder logistic with automatic nonstop-feeder
- Chase Changer with extended gallery
- 2 x Quick-lock die-chase
- 1 x 4mm cutting plate
- 2 x Stripping tool frames (top)
- 2 x Stripping tool frames (bottom)
- 1 x Set of top and bottom stripping tools
- 1 x frame for blanking grid
- 1 x frame for full sheet delivery
- 10 x logistic pallets (MK)



**Promatrix 145 CSB**



**MasterSet**



**Auto-Non-Stop delivery with automatic pallet changer on top of the floor**



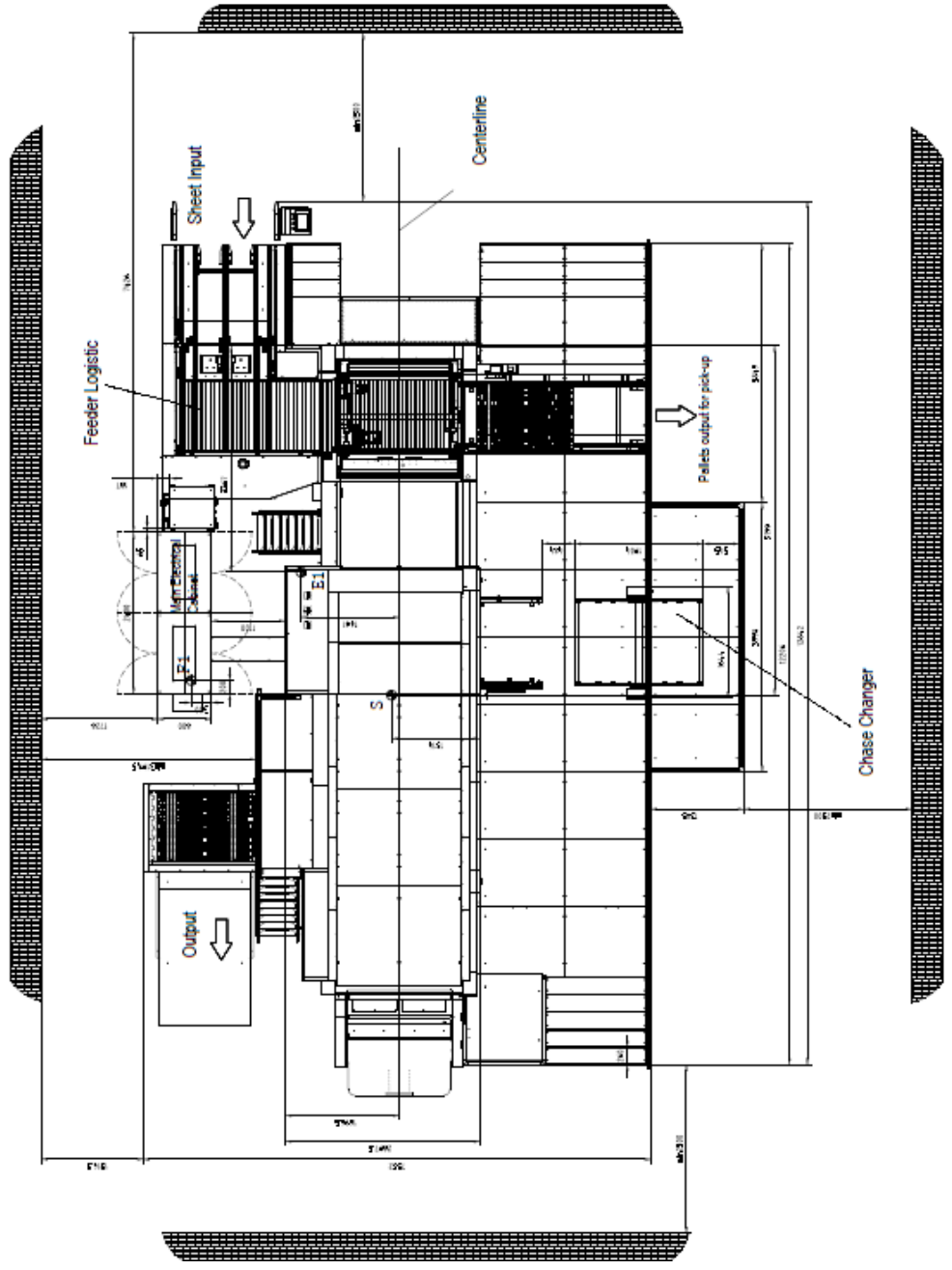
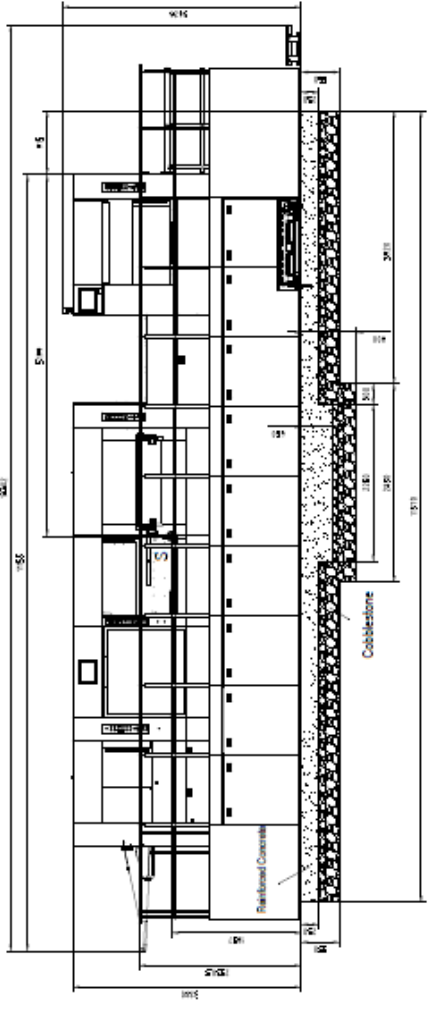
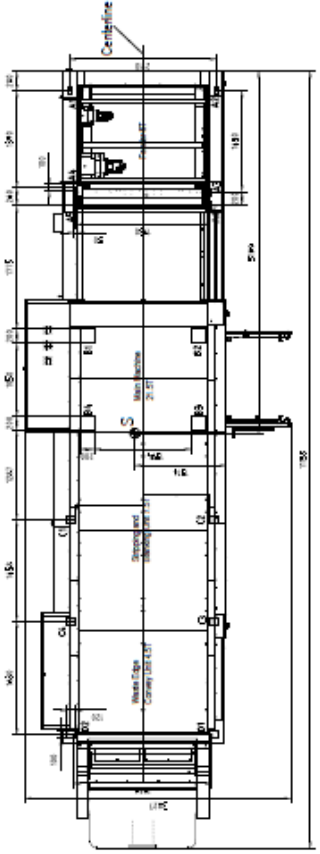
**Feeder logistic with automatic nonstop-feeder**



**Changer with extended gallery**



NO.	REVISION	DATE	BY	CHECKED
1	ISSUED FOR PERMIT	11/15/11	...	...
2	...	...	...	...
3	...	...	...	...
4	...	...	...	...
5	...	...	...	...
6	...	...	...	...
7	...	...	...	...
8	...	...	...	...
9	...	...	...	...
10	...	...	...	...
11	...	...	...	...
12	...	...	...	...
13	...	...	...	...
14	...	...	...	...
15	...	...	...	...
16	...	...	...	...
17	...	...	...	...
18	...	...	...	...
19	...	...	...	...
20	...	...	...	...
21	...	...	...	...
22	...	...	...	...
23	...	...	...	...
24	...	...	...	...
25	...	...	...	...
26	...	...	...	...
27	...	...	...	...
28	...	...	...	...
29	...	...	...	...
30	...	...	...	...
31	...	...	...	...
32	...	...	...	...
33	...	...	...	...
34	...	...	...	...
35	...	...	...	...
36	...	...	...	...
37	...	...	...	...
38	...	...	...	...
39	...	...	...	...
40	...	...	...	...
41	...	...	...	...
42	...	...	...	...
43	...	...	...	...
44	...	...	...	...
45	...	...	...	...
46	...	...	...	...
47	...	...	...	...
48	...	...	...	...
49	...	...	...	...
50	...	...	...	...



Notes:  
 1. All dimensions are in feet and inches.  
 2. All dimensions are to the centerline unless otherwise noted.  
 3. All dimensions are to the face of the wall unless otherwise noted.  
 4. All dimensions are to the centerline of the pipe unless otherwise noted.  
 5. All dimensions are to the centerline of the shaft unless otherwise noted.

DATE	11/15/11
BY	...
CHECKED	...
PROJECT	...
NO.	...
SCALE	...
PROJECT NO.	...
DATE	...
BY	...
CHECKED	...
PROJECT	...
NO.	...
SCALE	...
PROJECT NO.	...

MILLER GROUP CO., LLC  
 PROJECT NO. 11-001  
 DATE: 11/15/11