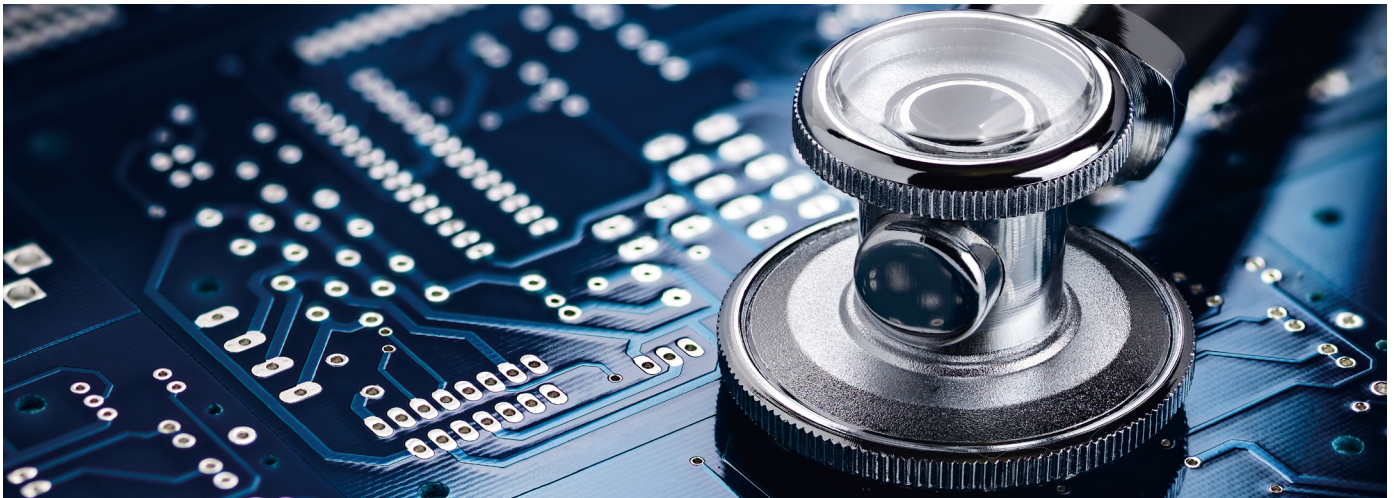


# Keep your Speedmaster in perfect condition. **Rely on our Machine Check.**

---



## **Ensure Peak Performance and availability**

Your printing machine must consistently deliver top performance to produce top-quality printed sheets at maximum speed. Only well-maintained equipment can achieve this.

Every machine with moving mechanical parts requires regular inspections, especially high-precision equipment like your Speedmaster® machines.

Our Machine Check Service offers a comprehensive assessment to determine the condition of your machinery.

As the name suggests, the Machine Check focuses on evaluating and documenting the status and condition of your machine. It ensures your equipment is thoroughly assessed, allowing you to restore its optimal performance with the appropriate repair packages.

## **Invest in your machine's future and secure Peak Performance with confidence – together with our Knowledge, Network and Solutions.**

### **Comprehensive visual inspection for optimal performance**

Our experts from HEIDELBERG® conduct a thorough visual inspection of all production-relevant assemblies, from the feeder to the printing unit, coating unit, and delivery, including associated peripheral devices. You will also have the option to inspect individual components such as UV systems, FoilStar®, or CutStar®.

### **Detailed Machine Check report**

We provide a detailed report with recommended measures to restore maximum performance, allowing you to plan these measures preventively and adapt them to your production program. In combination with our Preventive Packages, you receive predictable repairs and costs, along with transparent parts prices.

---

### The benefits of a Machine Check from HEIDELBERG

- Careful machine inspection at a fixed price: Benefit from a thorough examination of your machine without unexpected costs.
- Detailed action plan: Receive a comprehensive plan tailored to your machine's needs.
- Planned repairs based on inspection results: Following the Machine Check, necessary repairs can be scheduled within a defined timeframe – minimizing disruption to your production and ensuring continued performance.
- Improvement of your machine availability: Enhance your machine's reliability and reduce unexpected interruptions.
- Highest product quality: Ensure top-quality output with original parts from HEIDELBERG included in our comprehensive Service Parts Packages such as the Preventive Packages.



After a professional Machine Check, a detailed report with recommended actions is provided.



### Preventive Packages – protecting your investment

Following a thorough Machine Check, potential wear and risk areas become visible – providing the ideal basis for targeted preventive measures. That's why our Preventive Packages have been developed and implemented to avoid unplanned downtimes. The preventive replacement of worn-out parts is more cost-efficient compared to the costs incurred when the press is taken out of production due to sudden parts failure.

If you are interested in further proactive Services, please take a look at our Maintenance Services:



[heidelberg.com/en/maintenance-services](https://heidelberg.com/en/maintenance-services)

### Publishing information

Heidelberger Druckmaschinen AG  
Kurfuersten-Anlage 52–60  
69115 Heidelberg  
Germany  
Phone +49 6221 92-00  
Fax +49 6221 92-6999  
[contact@heidelberg.com](mailto:contact@heidelberg.com)  
Further details at:  
[heidelberg.com](https://heidelberg.com)

### Production note

Image credits: Heidelberger Druckmaschinen AG

### Trademarks

HEIDELBERG, the HEIDELBERG logotype, CutStar, FoilStar and Speedmaster are registered trademarks of Heidelberger Druckmaschinen AG in the U.S. and other countries. All other trademarks are property of their respective owners.

Version Apr 2025