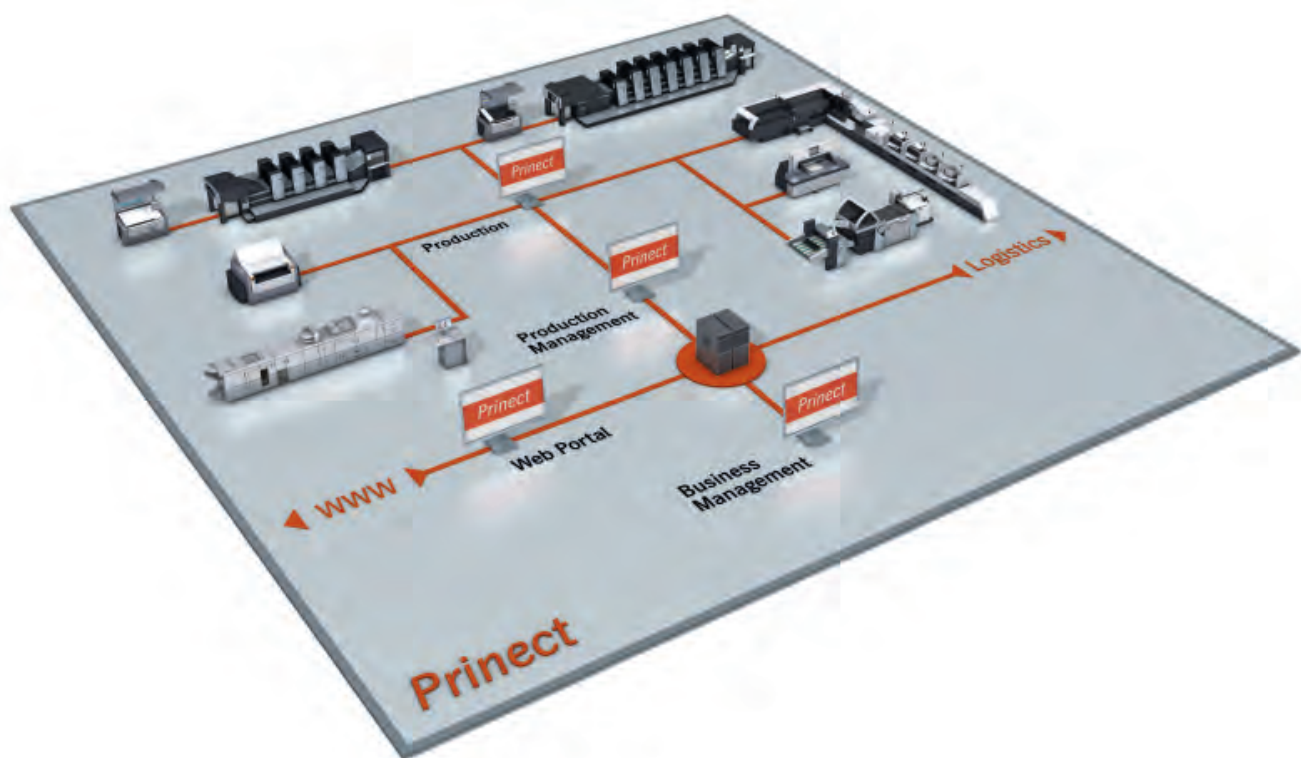


Prinect Pressroom Manager

HEIDELBERG



The information and control for the pressroom

Full integration of every process stage gives print shops a decisive competitive advantage. Prinect® Pressroom Manager communicates information intelligently so that print jobs are automatically available at the right press at the right time. This automation ensures substantially increased productivity and more transparency in the pressroom. Thanks to the efficient use of presetting data, there is a considerable reduction

in makeready times and waste at the press. The production data of the connected presses and color measurement systems are evaluated in Analyze Point. Informative reports supply values on performance and productivity as well as information about jobs and their quality. With the application Prinect Mobile you can access your print shop on your smartphone. Thus, Prinect Pressroom Manager makes it possible to react rapidly, directly and flexibly to changing requirements.

Perfect flow of information and data • Prinect Pressroom Manager controls every production step centrally and manages the production data required. Job and product information can therefore be retrieved rapidly and simply where it is needed: by the print shop manager, the job administrator or directly at the control panel of the press.

All job data at a glance • All the information on the print job, such as customer data, print runs, inks and paper, as well as scheduled processes or processes that have already been carried out, are shown in detail at every Prinect Cockpit workstation. Once a process step has been started, all the machine data and status information are reported back to Prinect Pressroom Manager in real time and are simultaneously available at every connected workstation and in the MIS. All those involved are therefore always kept completely up to date.

Central master data administration • Master job data on the customer, types of paper, inks and press parameters are collected once and saved centrally in Prinect Pressroom Manager. This avoids multiple data entry, saving time and minimizing errors.

Connecting printing presses • The printer receives a list containing the work processes and production data he needs directly at the control panel of the press. Prinect Pressroom Manager supplies e. g. preview images and data for paper, format and ink. This not only saves considerable time, but also significantly minimizes input errors.

The following machines can be integrated into the workflow:

- Speedmaster models with Prinect Press Center and Press Center Compact
- Speedmaster models with Prinect CP2000 Center
- Non-automated presses and presses from other manufacturers

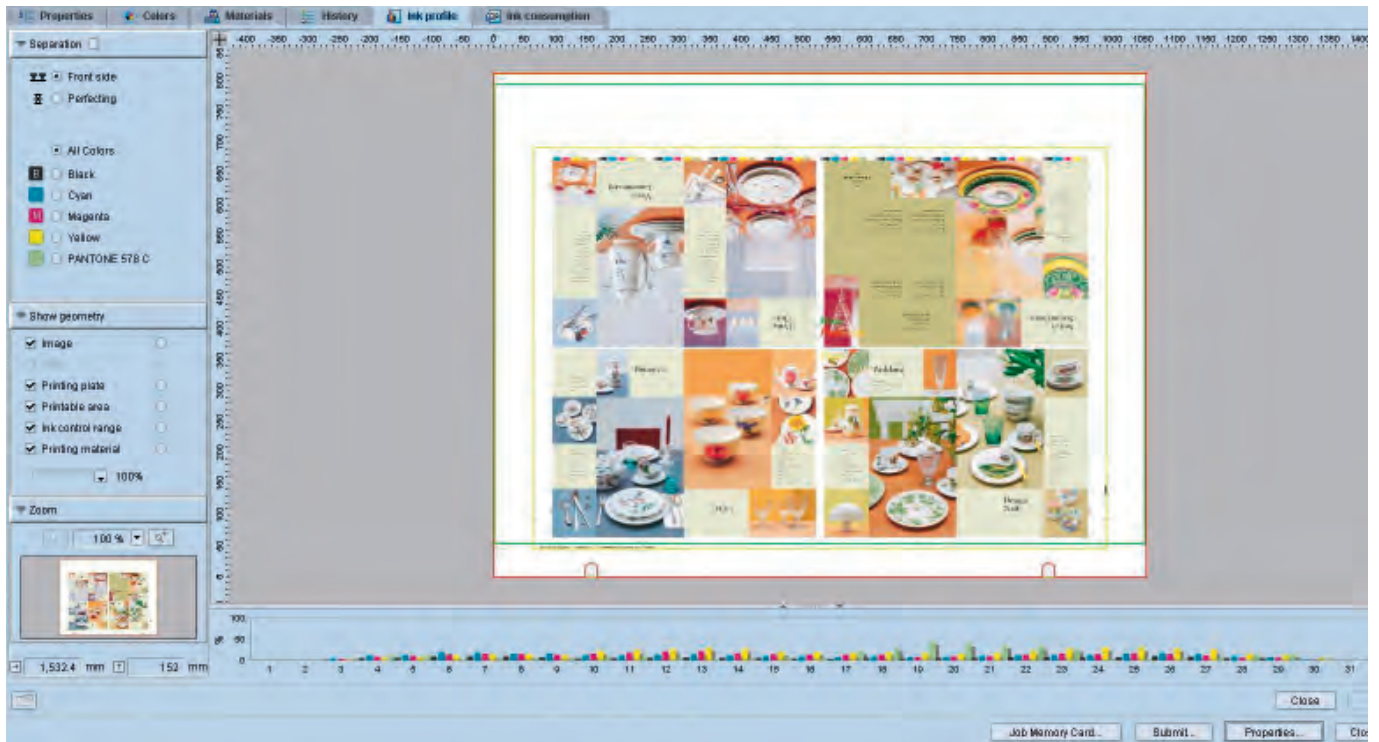
Additionally, Prinect Pressroom Manager is able to write to the Job Memory Card and USB stick storage media. This means that ink presetting data can be generated for all Heidelberg presses with remote inking.

Connecting non-automated printing presses

Non-automated presses can be incorporated into an efficient pressroom management system via a Data Terminal, as can also machines from other manufacturers. Prinect Pressroom Manager then sends all its job data to the relevant Data Terminal in the form of job lists. Up-to-date machine data are entered manually and forwarded by Data Terminal directly to Prinect Pressroom Manager - time-saving data collection in just a few steps.

Making work easier for the printer

Prinect Pressroom Manager makes manual tasks, such as writing daily time sheets or palette notes, a thing of the past. The palette note printout containing the essential information on the job and production can be started directly at the printing press control console. This not only makes the printer's work easier, pallets for downstream production stages can also be much more reliably identified, eliminating any unnecessary checking or searching.



Princt Scheduler provides a complete overview of the planning status of all outstanding print jobs.

Reducing makeready times

Reliable color presetting • Princt Pressroom Manager uses PPF data from the digital prepress department to automatically preset printing presses. These PPF data are converted into area coverage values for each ink zone and the default settings are forwarded to the press control console for calculation of the ink zone openings. Further parameters, such as paper and ink data for automatic selection of the characteristic curves are also forwarded to the control console. Makeready times and waste are reduced substantially and inking-up of the press is much faster. It is usually possible to save at least one pull per job. The tried and proven Princt Prepress Interface presetting functions have been systematically integrated into Princt Pressroom Manager.

Automatic setup of Princt Image Control

Princt Pressroom Manager communicates directly with Princt Image Control. According to the prepress data, print control strips, Mini Spots and controllable solid areas in the print image are recognized completely automatically. This facilitates the makeready process decisively and speeds it up significantly.

Efficient working with repeat jobs

Princt Pressroom Manager stores all the important setup data for the press. This ensures highly efficient handling of repeat jobs, because production can be carried out using exactly the same presetting data. This saves on average eight to ten minutes per repeat job.

Precise job evaluation with Prinect Analyze Point

Easy-to-read and up-to-date status display

Prinect Analyze Point continuously displays the current status of all on-going print jobs. Data such as printing speed, job information and sheet counter numbers on waste sheets, good sheets and the remaining print run can be called up. This makes for lean coordination processes with little organizational effort.

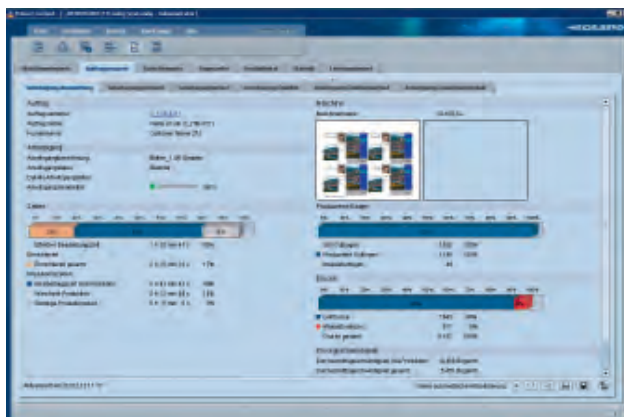
Comprehensive job evaluation • To respond fast and flexibly to changes, the whole production workflow needs to be analyzed regularly. Prinect Analyze Point rapidly provides a user-friendly overview of the work performed during individual shifts and shows how much time was needed for particular jobs. From the individual machine evaluations to an analysis of the previous 15,000 jobs, all results are displayed in clear graphics and tables. Deviations, delays or increases in waste can be precisely localized. Potential for optimization or savings can be identified and utilized more efficiently. Additionally, Prinect Analyze Point evaluates the job's color quality data, so that the course of the printing quality can be shown accurately and clearly. These quality reports are available from Prinect Image Control, Prinect Inpress Control and Prinect Axis Control.

Productivity evaluations and performance comparisons • With the help of the OEE figures describing the efficiency of the overall system according to indicators of time, speed and quality, the changing productivity of a printing press can be monitored over longer periods of time.

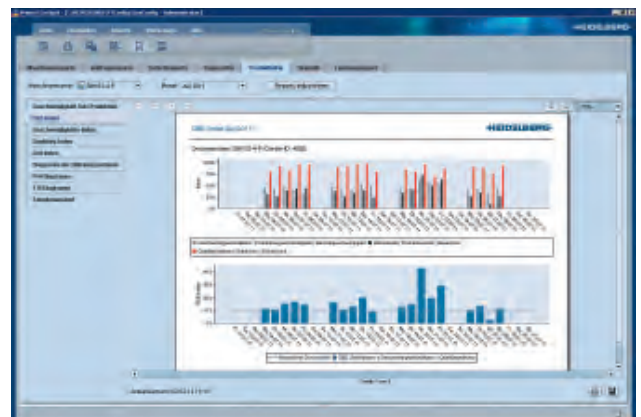
The productivity evaluations are rounded off with a performance comparison. They enable an in-depth insight into makeready times or production run speeds over a specific period of time or an individually selected group of printing presses. Prinect Analyze Point generates a protocol of the results that makes production transparent. This enables the effects of any implemented changes to be monitored and evaluated over a long period of time.

With the Prinect Performance Benchmarking option for the press control console, the comparison of your own print shop productivity can be further enhanced by anonymous comparison with machines in other companies.

Status information even on the go • The application for smartphones and tablet PCs – Prinect Mobile – provides valuable information for print shop and departmental managers as well as the sales force to support decisions and scheduling. Prinect Mobile enables a view of current production processes, even when you are out of the company. Depending on the configuration of the Prinect workflow system, the scheduling of pending jobs can be viewed in addition to the current status of machines, shifts and jobs.



Analyze Point provides a rapid and easily understandable overview on how the individual operations progressed.



The long-term productivity analyses are shown with the help of OEE indicators.

From Prinect Pressroom Manager to the complete Prinect Workflow

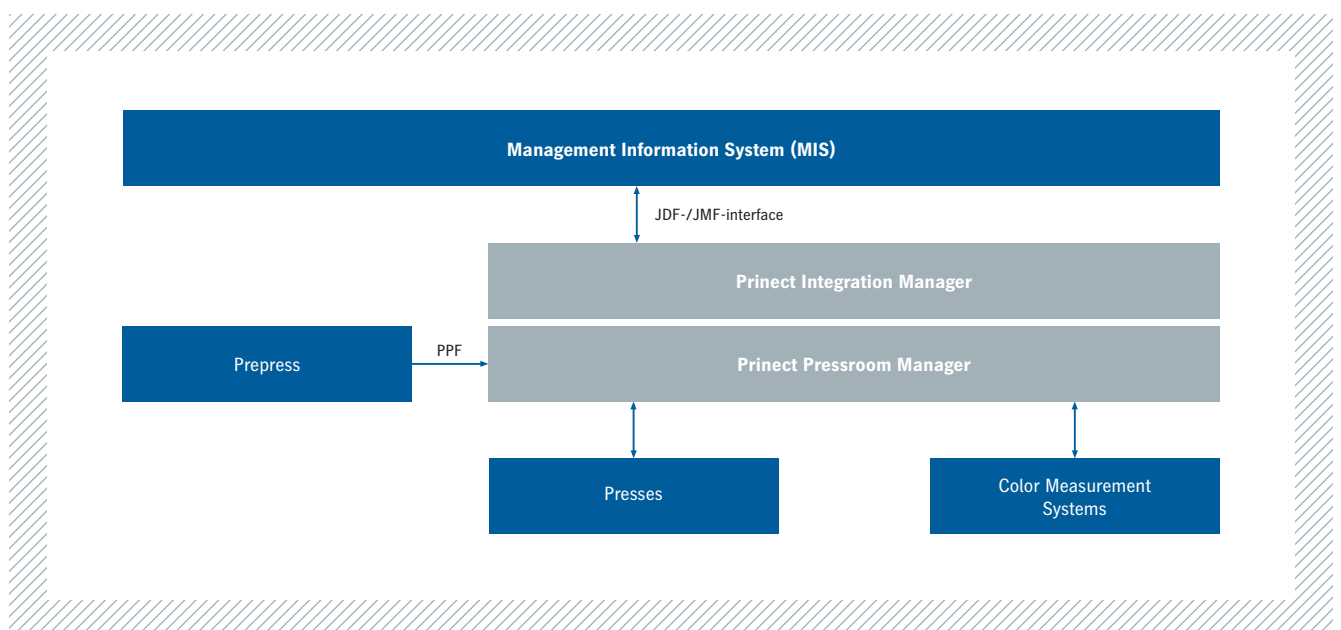
Prinect is the modular and scaleable print shop workflow from Heidelberg. It can be flexibly adapted to the individual requirements of every company. A prerequisite for the use of Prinect Pressroom Manager is PPF data from a prepress workflow in its lowest configuration.

The complete scope of functions is available only when there is an additional JDF connection to an MIS (Management Information System). Prinect Pressroom Manager combines the JDF job tickets generated by an MIS with the PPF data from prepress. In the next stages of the workflow, it controls the automated data flow, so the operations involved in a job, including all the relevant information, are available at the assigned press in their precise sequence in good time ready for processing.

The completely JDF-based pressroom workflow facilitates the exchange of data and information between administration and production. All job data collected by the MIS are transferred online via Prinect Integration Manager and no longer need to be entered again in the production department. This makes job preparation faster and more reliable.

With Prinect Integration Manager, Prinect Pressroom Manager can be extended to a complete Prinect workflow. Modules as Prinect Prepress Manager or Prinect Postpress Manager, as well as Prinect Scheduler expand the possibilities to plan deadlines and to track a job across all departments. Using this digital planning board, sudden changes can be carried out immediately and made visible to everyone involved.

Prinect optimizes and automates workflows, making them straightforward and transparent, based on an open data standard – the central JDF document – that stores all the information about a particular job. Prinect therefore plays a key role in optimizing coordination processes and increasing throughput while maintaining consistently high quality.



Prinect Pressroom Manager centrally controls all communications in the pressroom.

Publishing Information

Printed in: 03/12
Photographs: Heidelberger Druckmaschinen AG
Platemaking: Suprasetter
Printing: Speedmaster
Finishing: Stahlfolder, Stitchmaster
Consumables: Saphira
Fonts: HeidelbergGothicML
Printed in Germany

Trademarks

Heidelberg, the Heidelberg logotype, Prinect, Mini Spots, Prinect Press Center, Prinect Pressroom Manager, Printmaster and Speedmaster are registered trademarks of Heidelberger Druckmaschinen AG in the U.S. and other countries. All other trademarks are property of their respective owners.

Subject to technical modifications and other changes.

00.993.3663/02 en

Heidelberger Druckmaschinen AG

Kurfuersten-Anlage 52-60

69115 Heidelberg

Germany

Phone +49 6221 92-00

Fax +49 6221 92-6999

www.heidelberg.com

