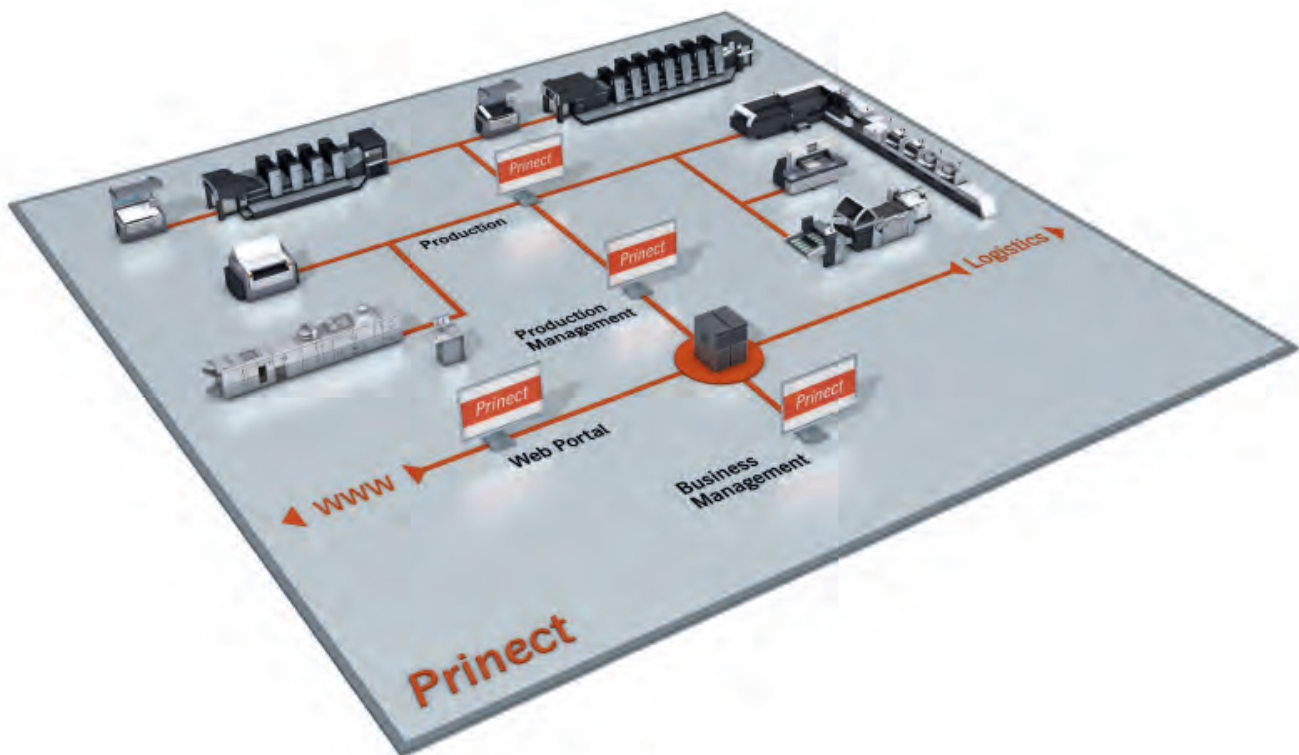


# Prinect Business Manager

HEIDELBERG



## **Prinect Business Manager – The flexible and powerful MIS solution for the Print Media Industry**

Business workflow solutions for printshops have to fulfill the manifold demands of different customer groups, thereby serving the high demands of Industrial Printers as well as providing an easy calculation system for smaller customers. The new Prinect Business Manager offers a highly scalable solution for these demands and also enables tailor-made

MIS workplaces for each operator. Individual task lists for each user in conjunction with powerful estimate and material management modules increase the efficiency of the order management. With the powerful JDF/JMF integration to Prinect production workflow the print production can be streamlined. Job costing and comprehensive reports offer highest transparency to run your printshop based on reliable data.



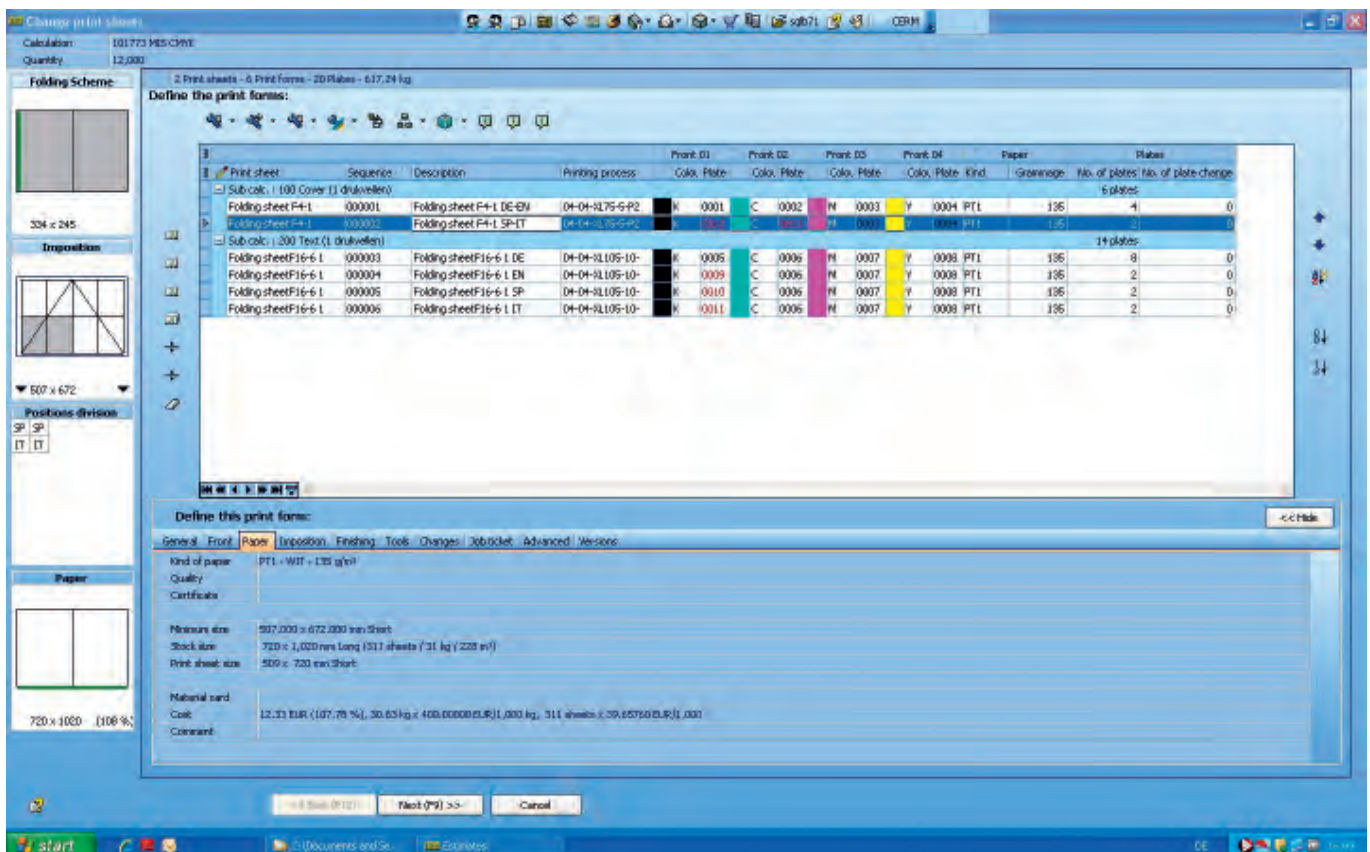
### Precise cost definition ensures attractive prices

The user-friendly estimating wizard enables a fast and flexible definition of cost and sales price. A comfortable view on all relevant data is secured by a navigator tree, directly showing all information on cost categories, sales prices and job status.

- Automatic proposal of cheapest print production process
- Estimate unlimited number of different run lengths
- Predefines layout parameters for re-use in production
- Full support of versioning jobs
- Speed estimating by re-use of pre-defined standard jobs and product catalogues
- Adapted estimating rules for digital print
- Waste overage can be assigned to all processes in Press and Postpress

- Direct comparison of different production variants (e.g. cost curve for different amounts comparing production in 105 and 75 format)
- Creation of graduated prices and price lists
- Predefinition of price models for customers and product groups (margin, value add, etc.)
- Estimate Explorer – all info visible at one sight
- One click follow-up list for order managers
- Send e-mails like quotes over smtp directly from the system
- Job-related messages can be directly linked and shown in the estimating module
- Sophisticated support of customer mailings

### Accurate estimating – the base for a successful printshop



Precise definition and visualization of the most efficient print production.

### Delivery and invoicing – Safe and fast processing of completed jobs

The Prinect Business Manager supports the user in all phases of job processing, leading him through the required actions. Handling efforts after print production will thereby be reduced significantly.

- Handling of multiple delivery addresses and partial deliveries
- Automatic creation of shipping labels
- Optimizing/grouping transports
- One click invoicing
- Invoices for individual items or on a daily basis.
- The finished products are stored in predefined locations
- Detailed invoicing analysis
- Accountancy export to bookkeeping systems

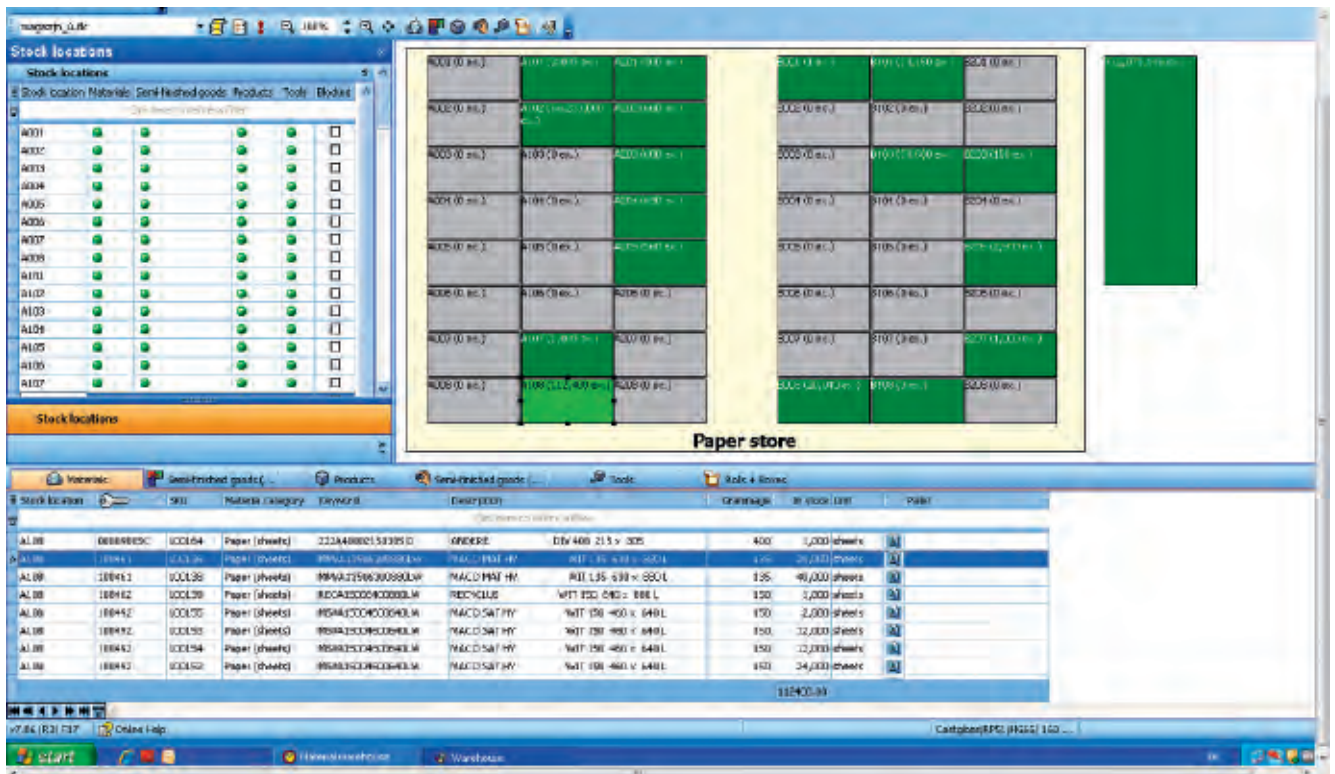
### Secures accurate and timely invoicing – with minimum efforts

### Warehouse and Material Management – Optimizing and automating stock levels

The integrated warehouse management enables precise definition of material order quantities, thus reducing stock levels considerably.

- Comfortable reservation and order process for materials
- Supplies detailed material status info for Estimate and Scheduling
- Complete warehousing solution with free definable stock locations
- Administration of semi-finished and finished goods
- Support of WIFI scanners for registration of stock movements

### Reduces material cost and downtimes caused by missing materials



Complete and detailed overview of the warehouse at a glance.

## Job Costing and Reports

The highly flexible reporting tool provides precise information on the profitability of your jobs and provides sophisticated long-term analysis.

- Real time job monitoring based on recorded production data
- Detailed comparison of estimate, order and real costs
- Wide range of financial reports, e.g. one click turnover analysis
- Detailed production reports
- Enables creation of customized reports
- Export functionality for all reporting data

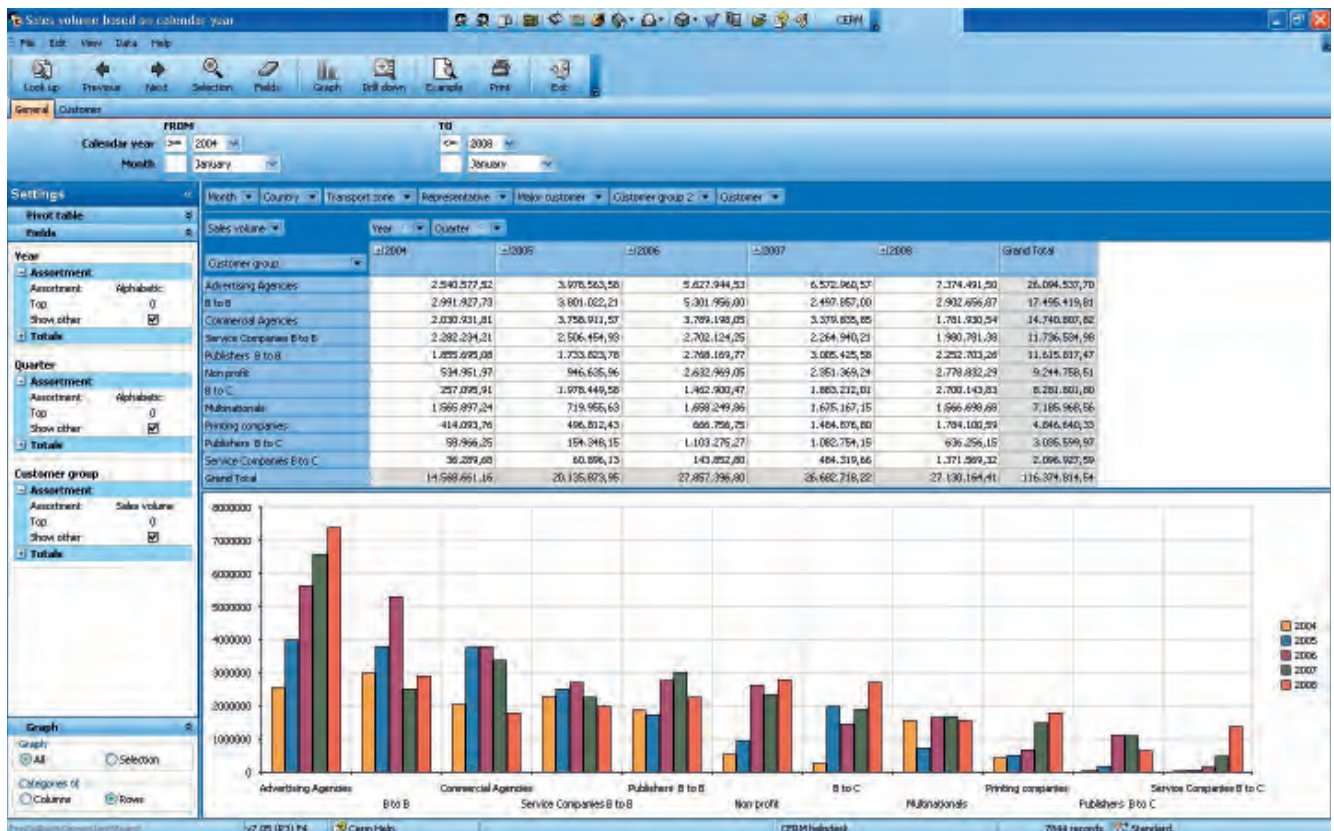
Keep track on the profitability of your printshop

## Integration of Prinect Business Manager with print production

Interfacing MIS and production workflow streamlines print production and provides reliable data for various reports.

- Powerful bidirectional JDF/JMF interface to the Prinect production workflow
- Supplies all administrative job data and complete process net to production workflow
- Predefines impositioning and folding schemes to speed up and automate Prepress work
- Receives and evaluates production data via JMF from Prinect workflow

Faster job processing and reliable production evaluation with less efforts



One click analysis for the profitability of your printshop, here with comparison of all customer groups.

**Publishing Information**

Printed in: 10/11  
Photographs: Heidelberg Druckmaschinen AG  
Platemaking: Suprasetter  
Printing: Speedmaster  
Finishing: Stahlfolder  
Consumables: Saphira  
Fonts: HeidelbergGothicML  
Printed in Germany

**Trademarks**

Heidelberg and the Heidelberg logotype, Prinect and Prinect Pressroom Manager are registered trademarks of Heidelberg Druckmaschinen AG in the U.S. and other countries. Prinect Business Manager, Prinect Integration Manager, Prinect Prepress Manager, Prinect Digital Print Manager and Prinect Postpress Manager are trademarks of Heidelberg Druckmaschinen AG in the U.S. and other countries. All other trademarks are property of their respective owners.

**Subject to technical modifications and other changes.**

**Heidelberg Druckmaschinen AG**

Kurfuersten-Anlage 52-60

69115 Heidelberg

Germany

Phone +49 6221 92-00

Fax +49 6221 92-6999

[www.heidelberg.com](http://www.heidelberg.com)

