

# Highly productive packing. **The Diana Packer Series.**





# Reach new heights. More than just a machine.

**With the Diana Packer Series, you can master any challenge related to the packaging of glued folding cartons.**

It doesn't matter whether you take the first step from manual to semi-automated packing with the **Diana Easypacker** or whether you automate the process to a large extent with the **Diana Smartpacker** and **Diana Packer 4.0**, with the solutions from MK Masterwork, which are sold and serviced by HEIDELBERG®, you can realize the full potential of your gluer. Bottlenecks of any kind are a thing of the past thanks to optimal productivity and relief for your employees.

Benefit from automation with HEIDELBERG; in production, it simplifies the control system and operation of the machines and increases the output.

In addition, you get access to an ecosystem that offers real added value – with service, digital services, software, cloud-based solutions, training and advice.

 [heidelberg.com](https://heidelberg.com)

# Productive personnel. Real added value.

**Each of the three machines in the Diana Packer Series meets very specific requirements. All three create real added value for you: They relieve your personnel and increase your productivity when it comes to the packaging of glued folding cartons.**

With the **Diana Easypacker**, you can get started with the semi-automatic packing of folding cartons. Manual packing is made easier; your personnel is free for other tasks. The advantage of the Diana Easypacker is that it can not only process classic folding carton design, but also special formats. With this flexibility, the machine complements the other two models in the Diana Packer Series.

**Diana Smartpacker** and **Diana Packer 4.0** automate the packing of folding cartons to a large extent. There are no limiting factors at the end of the process chain, so your gluer can run at full capacity. Compared to manual packing, you work more productively and economically.

Thanks to the high degree of automation, both machines offer additional advantages as well as a high degree of flexibility. For example, you can easily switch the Diana Smartpacker from one gluer to another if your production processes require it. And both the Diana Packer 4.0 and the Diana Smartpacker can be seamlessly integrated into your logistics chains.

 [heidelberg.com/en/diana-packer-series](https://heidelberg.com/en/diana-packer-series)



**MK Diana**  
Smartpacker

CO<sub>2</sub>  
compensated





PERFORMANCE

# Intuitive operation.

## Easy to use.

Regardless of the model, all machines in the Diana Packer Series are characterized by their intuitive operation. The user interface is characterized by clear pictographs and can also be set to different languages. That makes it very easy to learn and to use the machines.

### Increase your productivity and profitability:

#### Easy handling for higher productivity

##### **Diana Easypacker – Easy to makeready**

The **Diana Easypacker** prepares the flow of folding cartons in such a way that manual packing is easy. Thanks to improved ergonomics and the counting pulse displayed on the gluer, folding cartons can be removed in exact quantities. Additional increases in productivity are possible with extensions such as the MK packing table. The Diana Easypacker can be used flexibly behind different lines and can also be connected to third-party machines. It is easy to set up and has enough space for two operators to pack at the same time.

#### High throughput for any requirement

##### **Diana Smartpacker – Movable from line to line**

Due to its small footprint, the **Diana Smartpacker** is movable. This means: You can operate it flexibly on different gluers. Thanks to the new drive technology, the individual process steps run seamlessly and in an energy-efficient manner. Full shipping boxes can be removed from both the operator and drive sides. This makes it easier for you to integrate the machine into existing processes or set up new logistics concepts.

The **Diana Smartpacker** minimizes manual work, thereby reducing idle time. In addition, the handling of very smooth and narrow as well as large, heavy, and unwieldy folding cartons – from toothpaste to pizza cardboard boxes – is made easier. This significantly reduces manual work. The packing performance increases, and the deployment of personnel is minimized.

■ [heidelberg.com/smartpacker](https://heidelberg.com/smartpacker)

#### Fits into any production environment

##### **Diana Packer 4.0 – Flexible packing schemes**

The **Diana Packer 4.0** is the top performer within the Diana Packer series. Your packaging processes are reliable and highly productive with it. You can pack up to five rows and seven layers of folding cartons per shipping carton – with flexible packing schemes and multiple output points.

---

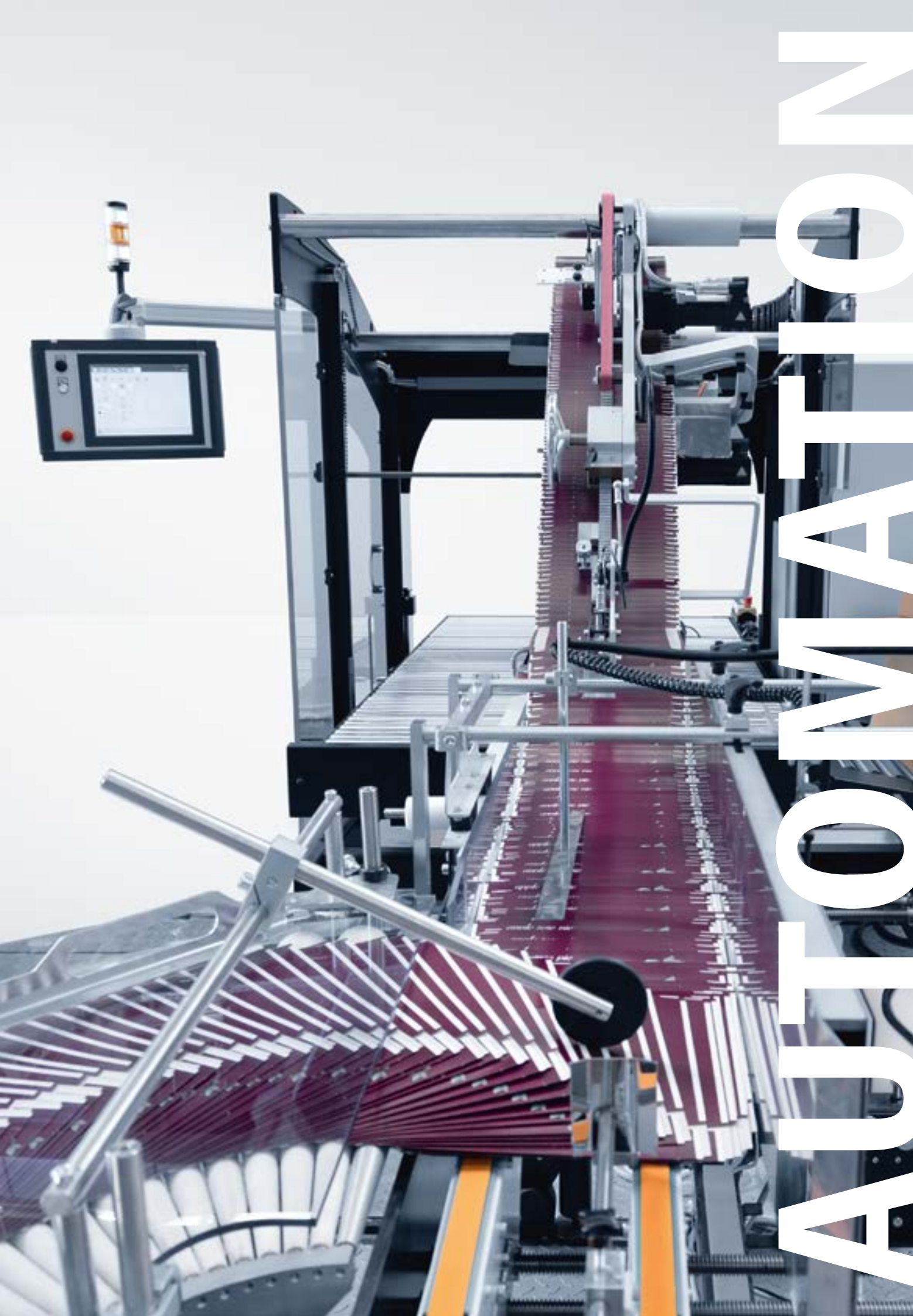
### Remote Service & Support

---

The Diana Smartpacker and the Diana Packer 4.0 offer the possibility of remote maintenance and remote diagnosis. During production, HEIDELBERG can, at your request and with your consent, carry out fine adjustments and troubleshooting. On the one hand, this improves productivity, and on the other hand, it reduces down time.

---



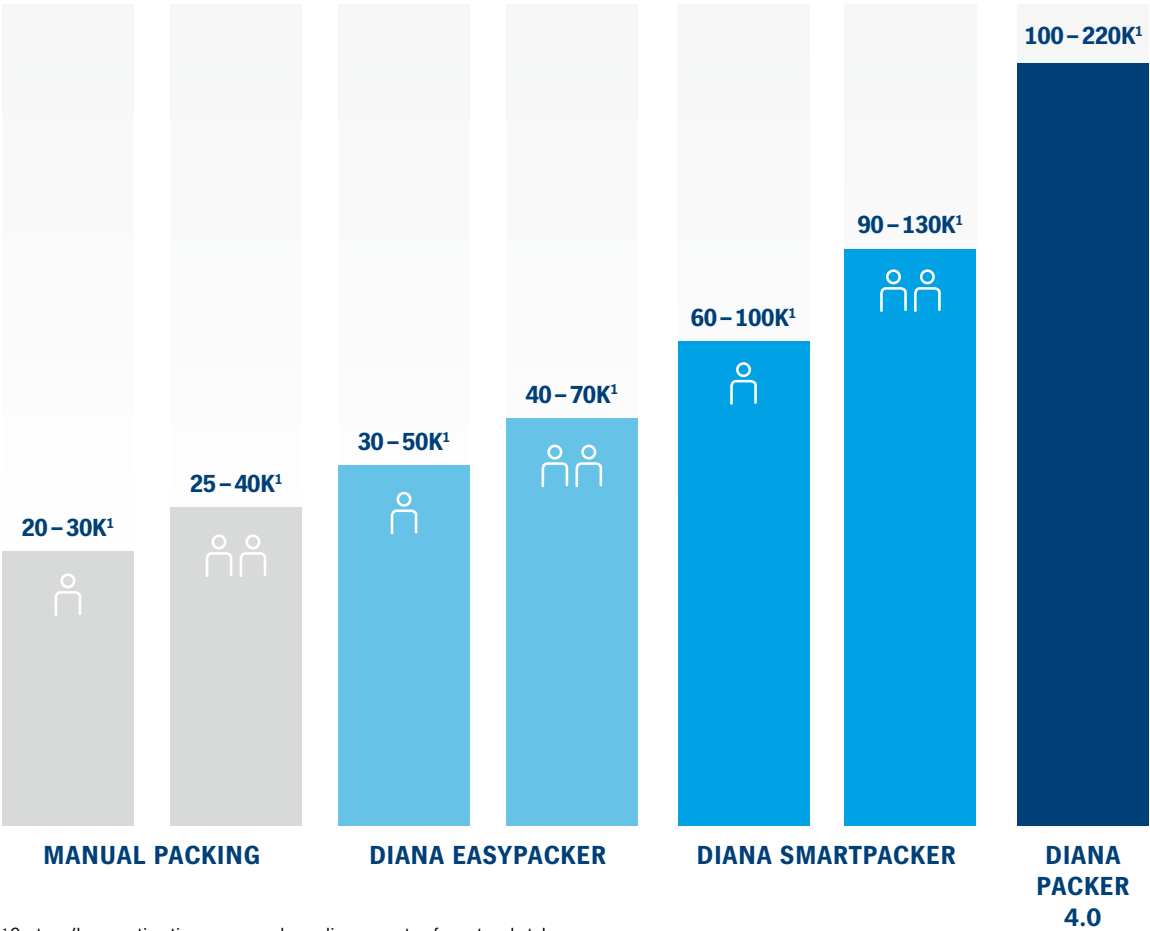


INNOVATION



# DIANA PACKER

**What is the right packer for you?**  
Choose a solution depending on your performance needs.



<sup>1</sup>Cartons/hour; estimation may vary depending on carton format and style.



For more information and technical specifications on the Diana Packer Series, click here:  
[→ heidelberg.com/en/diana-packer-series](https://heidelberg.com/en/diana-packer-series)

# R SERIES



Diana Easypacker



**Dynamic speed control** of the removal section facilitates the handling of the folding cartons.



**Interfaces to** a Diana Folder Gluer ensure convenient operation of the production line and fast reaction times for intervention in the production flow.



The optional **pneumatic packing table** supports comfortable and ergonomic work.



Its **automation** and **flexibility** can increase packing output by up to 50 percent compared to purely manual packing of folding cartons.



**Fast packing** of up to 70,000 folding cartons per hour and more can be achieved by the machine design.



**Short setup times** and **easy positioning** help operators with frequent job changes.



Diana Smartpacker



The **high level of automation** reduces many manual touchpoints.



**Outstanding packing rates** of more than 100,000 folding cartons per hour enable reliable and consistent packing with minimal manpower.



The **flexible output** of the filled outer cartons on the operator or output side adapts to space and logistics requirements.



**High flexibility** enables packing schemes from 1 to 4 rows and layers in the outer carton.



The **extended packing schemes** make it easy to implement subsequent variants, such as packing on the closure flap, creasing line 2 or 4.



The **Machine control on HMI** leads to the following advantages: quick learning during initial installation, excellent adaptation from previous models, and simple operation.





Diana Packer 4.0



The **outstanding performance** of the peripheral equipment enables the packing of folding cartons at over 200,000 pieces per hour.



**Automatic Case Control** enables maximum flexibility by integrating downstream logistics processes as well as fully automatic packing of 1 to 5 rows and layers.



Box sampling guarantees **reliable quality control** at the right point in the packaging process.



The **extended packing schemes** mean that subsequent variants, such as packing onto the closure flaps creasing line 2 or 4, are easy to implement and quick to set up.



An almost **autonomous packaging process** is provided by the integration of upstream and downstream peripherals and logistics systems.



**MK Robotics** can be used to automate the entire process, including carton sealing, labeling and palletizing.

# Automation. Made to measure.

The Diana Packer Series gives you the flexibility to automate your company's packing processes to the extent that you need, and that pays off for you.

## From semi-automated to almost autonomous packaging process:

### Efficient packing performance

#### Diana Easypacker

Thanks to its flexibility, the **Diana Easypacker** can increase the packing capacity by up to 50 percent compared to purely manual packing of folding cartons. It is perfect for higher production speeds of up to 70,000 folding cartons per hour.

### Minimum deployment of personnel

#### Diana Smartpacker

The **Diana Smartpacker** automates many packing steps that previously had to be carried out manually. This significantly increases the packaging performance in the medium capacity range. More than 100,000 glued folding cartons per hour can be packed reliably and consistently with minimal staffing.

 [heidelberg.com/smartpacker](https://heidelberg.com/smartpacker)

### Maximum speed

#### Diana Packer 4.0

With over 200,000 glued folding cartons per hour, the **Diana Packer 4.0** is one of the fastest packaging systems on the market. The highly automated machine achieves the highest production speeds so that it can keep up with any gluer. With the Diana Packer 4.0, there are no longer any bottlenecks in your operation when it comes to folding carton gluing and packing.

With the Automatic Case Control function, it determines both the packing scheme for filling several layers and rows and the automatic feeding and dispensing of the outer cartons. With the Diana Packer 4.0, you can achieve an almost autonomous packing process by integrating interleaving sheet feeders, carton erectors, carton sealers, and conveyor systems.

# Relieving personnel. Increasing productivity.

**From tablet cartons to pizza boxes – Machines from the Diana Packer Series remove manual engagement in the packaging process. Regardless of being a traditional operation or a highly industrial packaging specialist: You reduce unit costs and increase the productivity of your folding carton gluer and postpress.**

**Diana Easypacker** makes it easier to get started with automated carton packing. Thanks to its high level of flexibility in terms of cardboard box design, the small and quickly adjustable Packer is also the perfect addition to new and existing machines for handling a variety of folding cartons.

The **Diana Smartpacker** with an output of more than 100,000 cartons per hour is ideal for packaging operations that want to increase automation and productivity with minimum manpower and therefore need a compact and movable machine that can be used flexibly on different gluing lines.

With an output of up to 220,000 folding cartons per hour, **Diana Packer 4.0** produces as fast as any folding carton gluer – and in almost autonomous operation. Highly industrial packaging specialists can also subsequently integrate the machine into almost any production line (also from third-party manufacturers) in order to increase capacity and efficiency with minimal personnel costs.

 [heidelberg.com/en/diana-packer-series](https://heidelberg.com/en/diana-packer-series)



“

The Diana Smartpacker helps our customers to simplify the handling of the glued folding cartons behind the gluing machine and fully utilizes the performance of the machine. With its compact design this enables our customers to think about new logistics concepts that were previously not possible due to space and cost constraints.

**NIKO SCHMIEDEBACH**

Product Manager Postpress Packaging  
Heidelberger Druckmaschinen AG  
Germany



Learn more about the  
Diana Packer Series.

→ [heidelberg.com/en/  
diana-packer-series](https://heidelberg.com/en/diana-packer-series)

# Everything you need in one place. The HEIDELBERG ecosystem.

## Remote Services

Enjoy the benefits of fast and remote problem solving, maintenance and analysis of machine performance.



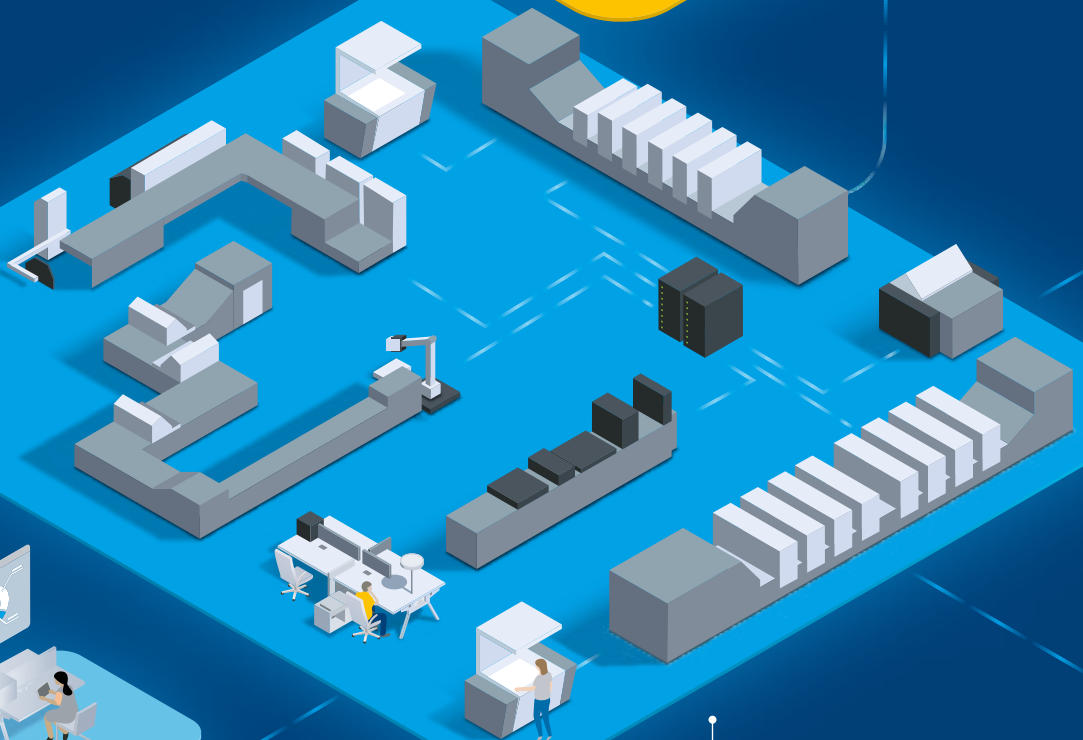
## On-site services

From technical service to parts delivery: To ensure stability in your production, we provide 24/7 support worldwide.



## Prinect Business

Automate your commercial processes and see where you make or lose money.



## Prinect Production

Make your print processes perfectly seamless with volume-based pricing.



## End-to-end production workflow

Increase productivity with speed, quality, digital integration, and reliability.



Every print shop is different, and every customer has unique, comprehensive needs. That is why we have developed our offerings to serve these needs all across the spectrum. What makes us

unique is that you can find everything here that makes your print shop smarter, faster, and better. Make HEIDELBERG your one-stop shop for everything that contributes to your success.

### The digital customer portal

Reach cloud-based production, shopping, support, reporting, and administration services from anywhere, at anytime.

### Sustainable production

Go green and reduce waste and energy consumption with our sustainable solutions.

### Saphira® Consumables

Use proven and tested consumables optimized for your HEIDELBERG equipment, including an eco-friendly product line.

### The right investment

HEIDELBERG machines have a high resale value. If you invest in it today, it will pay off in the future.

### Print Media Center Network

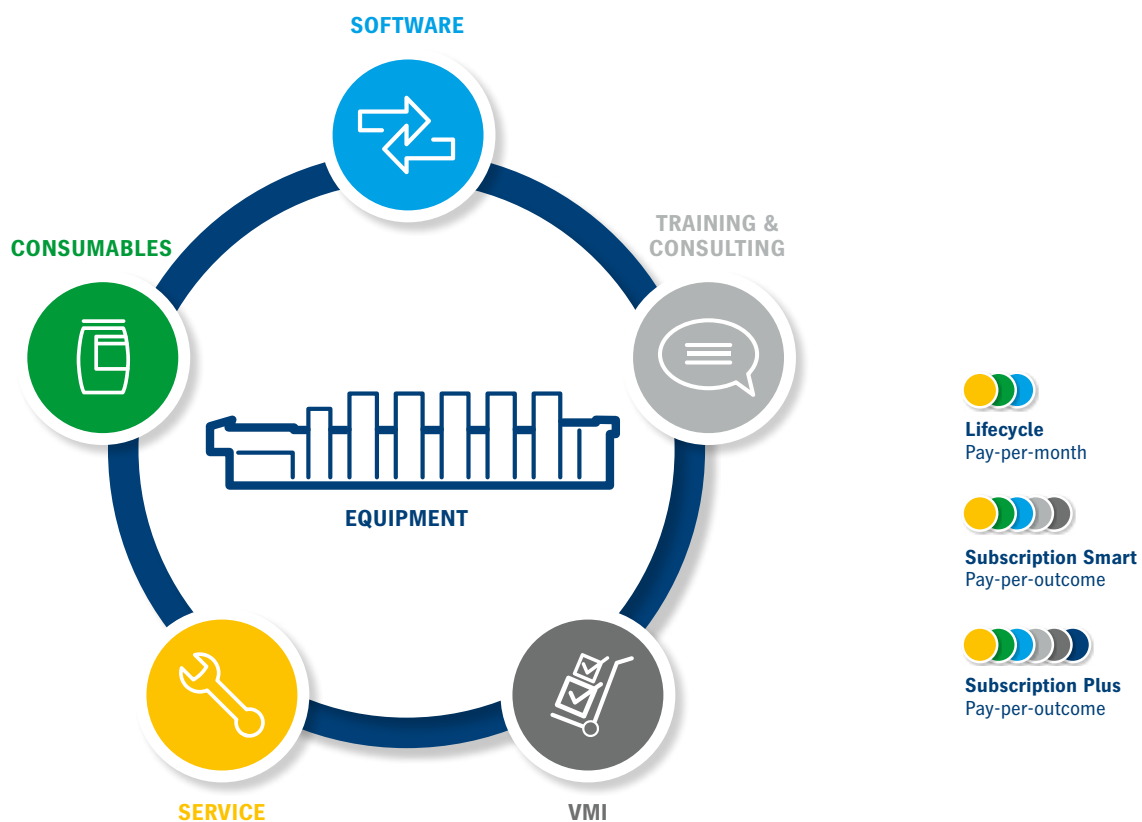
Experience our equipment running at three locations: Wiesloch-Walldorf (GER), Atlanta (USA), Shanghai (CHN).



# HEIDELBERG Contracts.

## Contract packages as individual as your requirements.

You benefit from a combination of best-in-class products from **HEIDELBERG**. Our Lifecycle and Subscription packages help you keep your machines running at their best.



Our contracts are scalable to your needs: We put together a lifecycle contract package for you from at least two of the three components – service, consumables and software. This offers you everything you need for reliable and stable printing production. The services are billed on a monthly basis. Subscription also includes training and consulting, Vendor Managed Inventory (VMI), and optional equipment. VMI automates the management of consumables. Thanks to the strong partnership with HEIDELBERG, you can enjoy the benefits of a comprehensive and optimized print production

system. With Subscription, payment is made per printed sheet.

The following applies to both packages: You reduce your process costs and gain more time for your customers.

**Have we piqued your interest?** Let us work together to create your customized solution package that best fits your needs.

➔ [heidelberg.com/contracts](https://heidelberg.com/contracts)



## How can we help you? Get in touch with us.

We hope that this brochure will inspire you. There is more we can tell you about how we could make your printing business more efficient and profitable.

If you are interested in the **Diana Packer Series** or would like to learn more about what we can offer, feel free to contact us. We're only ever an e-mail or phone call away.

Reach us by email

➔ [contact@heidelberg.com](mailto:contact@heidelberg.com)

Use the contact form

➔ [heidelberg.com/info](https://heidelberg.com/info)

Please find the phone numbers of your  
local sales organization here:

➔ [heidelberg.com/contact](https://heidelberg.com/contact)



**Publishing information**

Heidelberger Druckmaschinen AG  
Kurfuersten-Anlage 52 – 60  
69115 Heidelberg  
Germany  
Phone +49 6221 92-00  
Fax +49 6221 92-6999  
[contact@heidelberg.com](mailto:contact@heidelberg.com)  
Further details at:  
[heidelberg.com](http://heidelberg.com)

**Production note**

Image credits: Heidelberger Druckmaschinen AG;  
Masterwork Machinery GmbH (12); Shutterstock, Jacob Lund (19)  
Platemaking: SupraSetter  
Druck: Speedmaster  
Printing: Stahlfolder  
Consumables: Saphira

**Printed in Germany****Trademarks**

HEIDELBERG, das HEIDELBERG Logo, Prinect, Saphira, Speedmaster, Stahlfolder and SupraSetter are registered trademarks of Heidelberger Druckmaschinen AG in the U.S. and other countries. All other trademarks are property of their respective owners.

For details on the emissions of the Diana Packer Series, please visit us at [heidelberg.com/emissionsangaben](http://heidelberg.com/emissionsangaben)

**Liability for contents**

The contents of this brochure have been prepared with great care. No warranty or liability is accepted for the correctness, completeness, or accuracy of the information. There is no guarantee or warranty that the customer will be able to achieve the values and numbers (e.g. relating to the function and performance of the machine and the software) specified in the brochure. The information provided is based on ideal conditions and proper use of the machine and the software. Achieving these values and numbers depends on a variety of factors and circumstances that are outside the control of HEIDELBERG (e.g. machine settings, technical conditions, ambient conditions, raw materials and supplies used, consumables used, standard of care and maintenance of the machine, expertise of the operator, meeting the respective system requirements, etc.).

**Version Mar 2024**



**长荣股份**  
**MASTERWORK**